

Agilent E5071C ENA Network Analyzer

9 kHz to 4.5/6.5/8.5 GHz

***100 kHz to 4.5/6.5/8.5 GHz
(with bias tees)***

***300 kHz to 14/20 GHz
(with bias tees)***

*The industry standard
in RF network analysis*



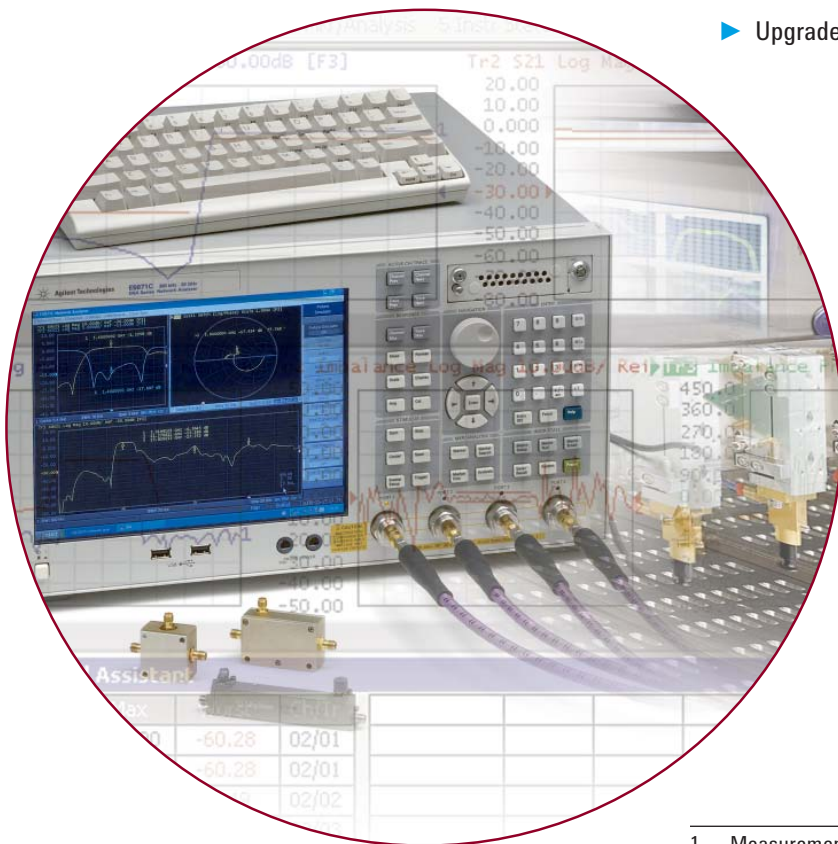
Agilent Technologies

ENA – New standards in speed, accuracy and versatility

Agilent's ENA network analyzers deliver new standards in speed, accuracy and versatility for RF network analysis. Designed with a wide range of measurement capability to meet multiple network analysis needs, the ENA offers efficiency and flexibility for both manufacturing and R&D applications in industries such as wireless communication, automotive, semiconductor, and medical.

Key features




- ▶ Wide frequency coverage: 9 kHz to 20 GHz
- ▶ Wide dynamic range: > 123 dB
- ▶ Low trace noise: < 0.004 dBrms at 70 kHz IFBW
- ▶ Fast measurement speed: 41 msec¹
- ▶ Flexible multiport configuration: up to 22 ports
- ▶ Powerful analysis and error correction
- ▶ Flexible port configuration meets multiple measurement needs
- ▶ Built-in bias tees and a DC measurement AUX port enable simultaneous DC evaluation
- ▶ State-of-art calibration techniques reduce measurement errors
- ▶ Test automation tools increase speed and efficiency
- ▶ Advanced characterization of mixers and amplifiers with frequency offset mode (optional)
- ▶ Powerful connectivity with Open Windows[®] OS, USB, LAN, and GPIB
- ▶ Upgrade all available ENA options at any time



1. Measurement speed taken at 1601 points with a full-2 port calibration performed.

Flexible test port architecture for a variety of applications

Select the number of ports, frequency and bias tees to fit your application

		Number of ports		Frequency range						Option numbers		
		9 kHz	100 kHz	300 kHz	50 MHz	4.5 GHz	6.5 GHz	8.5 GHz	14 GHz	20 GHz		
 2-Port											E5071C-240	
					with bias tees						E5071C-245	
											E5071C-260	
					with bias tees						E5071C-265	
											E5071C-280	
					with bias tees						E5071C-285	
					with bias tees						E5071C-2D5	
 4-Port											E5071C-440	
					with bias tees						E5071C-445	
											E5071C-460	
					with bias tees						E5071C-465	
											E5071C-480	
					with bias tees						E5071C-485	
					with bias tees						E5071C-4D5	
 22-Port											E5071C-440 or -445 E5092A	
											E5071C-460 or -465 E5092A	
											E5071C-480 or -485 E5092A	
											E5071C-4D5 E5092A	
											E5071C-4K5 E5092A	

Enhanced usability increases efficiency in R&D & manufacturing

Providing the latest in modern technology, Agilent ENA network analyzers provide the performance and features needed in R&D and manufacturing for wide range of applications.

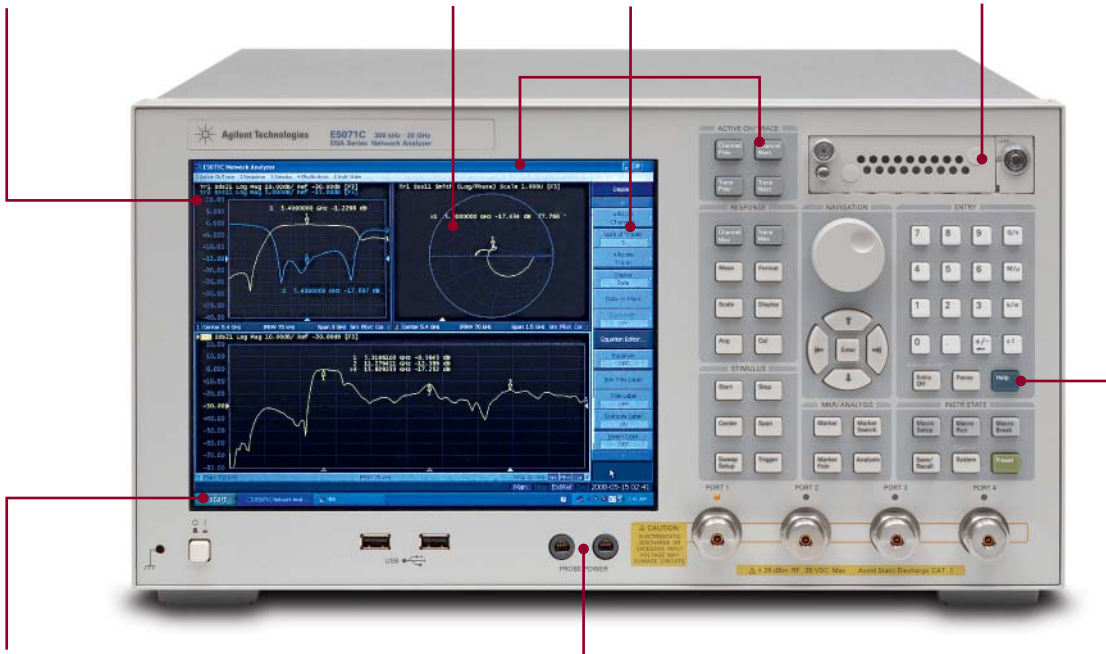


Class largest (10.4 inches) XGA color LCD with touch screen

160 measurement channels and 16 measurement traces

Intuitive user interface: hard keys, soft keys, and pull-down menus

Removable HDD for secure environments (optional)

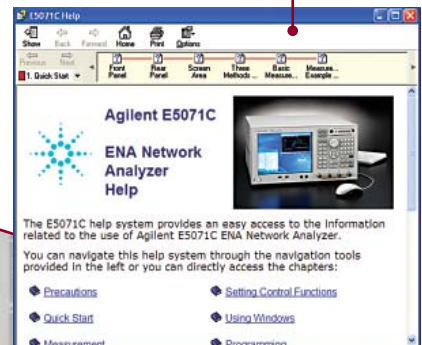


Windows® Open Operating system

Dual probe power source

The ENA's intuitive user interface lets you easily set up complex measurements and quickly retrieve measurement data.

Context sensitive embedded help

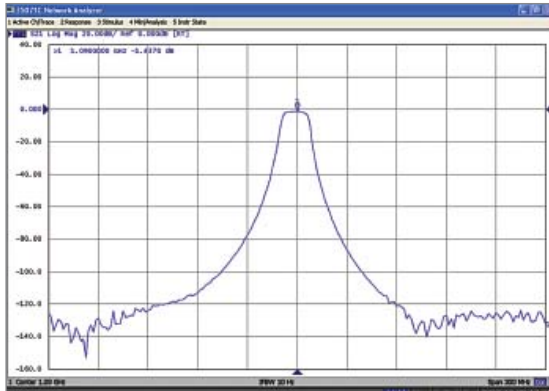


ENA – New standards in speed and accuracy

Agilent's new generation of network analyzers meets and exceeds what was possible with the 8753 family. Carrying on the family tradition, the ENA delivers new standards in speed, accuracy and versatility for RF network analysis.

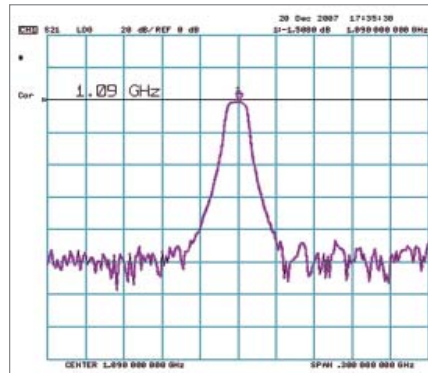
Wide dynamic range

>123 dB dynamic range provides more precise evaluation of high rejection filters.



E5071C

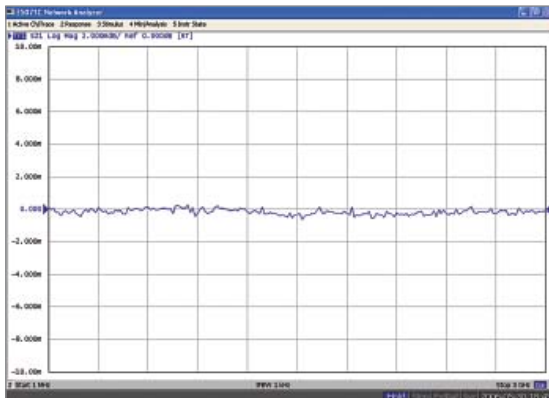
Dynamic range comparison: IFBW = 10 Hz



8753ES

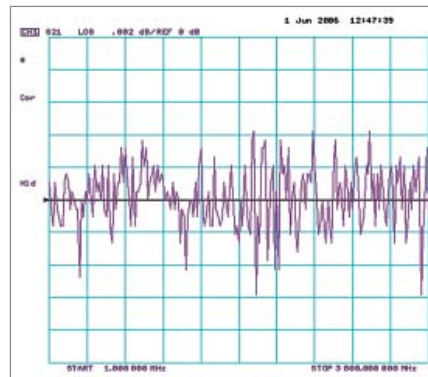
Low trace noise

<0.004 dBrms at 70 kHz IFBW helps minimize errors when measuring high-quality, low loss devices.



E5071C

Trace noise comparison: IFBW = 1 kHz



8753ES

High stability

4 times better long-term temperature stability than the 8753ES for more confident evaluations.

E5071C 0.005 dB/°C

8753ES 0.02 dB/°C

Stability versus temperature

Fast measurement speed

More than 20 times faster than the 8753ES to increase your throughput and lower your cost per component.

E5071C 41 msec

8753ES 848 msec

Measurement speed comparison:

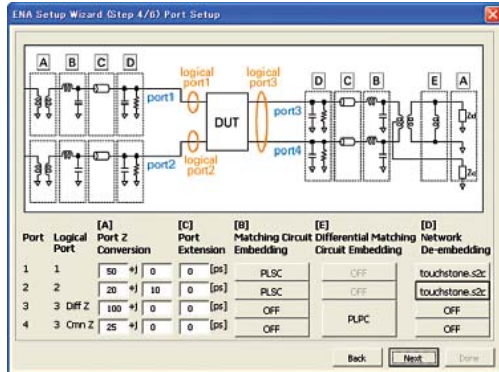
1601 pts, Full-2 port cal, 1 GHz to 1.2 GHz
IFBW = 6 kHz (8753ES), 500 kHz (E5071C)

Enhanced measurement capability for a variety of applications

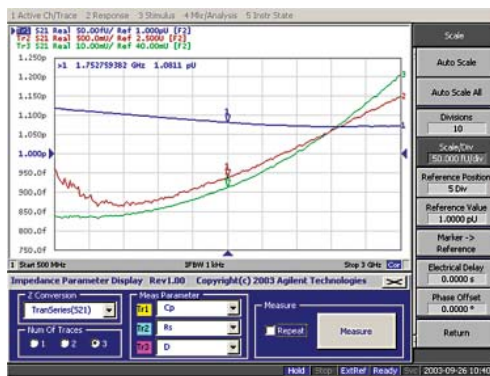
The Agilent E5071C ENA combines the highest RF performance with powerful analysis capabilities and automated test tools that increase test efficiency and yield.



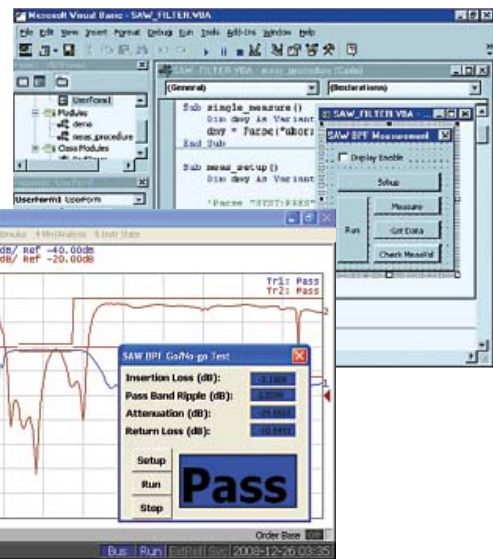
High-performance ECal modules dramatically simplify the calibration process



Fixture simulator settings with the setup wizard



Impedance value display



Built-in VBA programming and customizable user interface

Powerful analysis capabilities

- ▼ Fixture simulator for
 - Mixed-mode S-parameter measurements¹
 - Embedding and de-embedding
 - Matching circuit simulation
 - Port impedance conversion
- ▼ Equation editor for real-time data processing
- ▼ Time-domain analysis (optional)
- ▼ Absolute value measurement
- ▼ 75 ohm measurement with a minimum loss pad
- ▼ Modeling devices with Agilent Advanced Design System (ADS) and IC-CAP
- ▼ Dielectric and magnetic properties measurement with Agilent materials measurement software

1. 4-port option required.
2. E5071C-008 frequency offset mode required.

State-of-art calibration techniques

- ▼ Up to full 4-port SOLT, TRL, or unknown thru calibration
- ▼ Automatic port extension
- ▼ Adapter removal or insertion
- ▼ ECal module with various connector types or user-characterized ECal for use with any adapter
- ▼ Scalar mixer calibration and patented vector mixer calibration²

Test automation tools

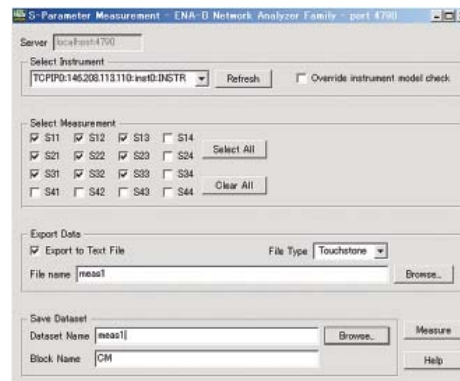
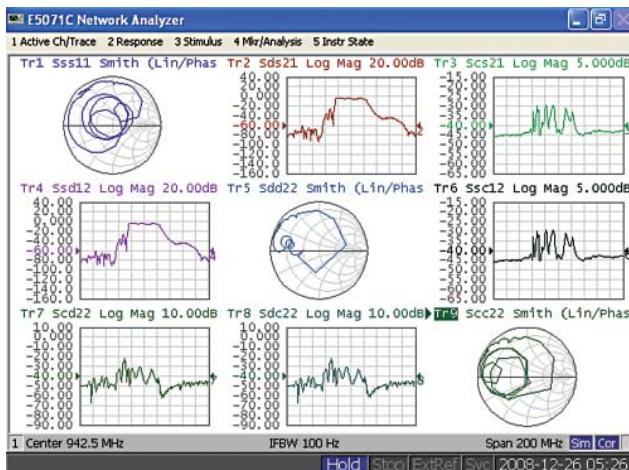
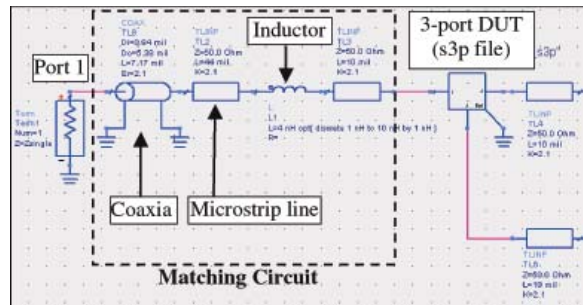
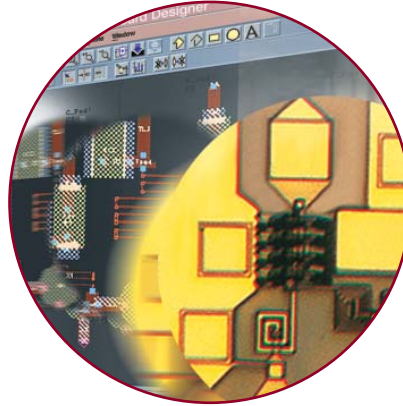
- ▼ Easy-to-use built-in VBA programming environment for fast post data processing
- ▼ Measurement Wizard Assistant (MWA) software for multipoint measurement system (optional)
- ▼ Pre-defined limit test functions for pass/fail testing in production

■ Accurate and efficient component design and verification

Circuits

With a combination of speed, accuracy, and advanced functionality, the ENA provides powerful general-purpose network analysis. The ENA offers extensive measurement capabilities, analysis features, and post data processing capabilities for effective design characterization.

The ENA has real-time fixture simulation capability, which lets you specify components as they are used in actual circuits. Bundled VBA macros and analysis functions enable fast, easy post data processing. Measured data is easily shared with EDA tools, such as Agilent's Advanced Design System (ADS). This enables you to quickly link measurement results back to your simulations to improve your designs and accelerate design verification.



Industry-leading RF performance

Design high-performance products with confidence.

- ▼ State-of-the-art calibration techniques for the highest measurement accuracy
- ▼ Automatic port extension for in-fixture devices
- ▼ Fixture simulator for embedding or de-embedding user-defined circuits

Application Note: Network Analysis – Calibration - Specifying Calibration Standards and Kits for Agilent Network Analyzers, AN 1287-11, [5989-4840EN](http://cp.literature.agilent.com/litweb/pdf/5989-4840EN.pdf) <http://cp.literature.agilent.com/litweb/pdf/5989-4840EN.pdf>

Application Note: Network Analysis – De-embedding and Embedding S-parameter Networks Using a Vector Network Analyzer, AN 1364-1, [5980-2784EN](http://cp.literature.agilent.com/litweb/pdf/5980-2784EN.pdf) <http://cp.literature.agilent.com/litweb/pdf/5980-2784EN.pdf>

Accelerate design verification

Simplify complicated measurement procedures and reduce your test program development time.

- ▼ Free sample programs on the Agilent Web site
- ▼ Equation editor for real-time data processing
- ▼ Powerful connectivity with Open Windows® OS; USB, LAN, GPIB, and a Web based remote user interface

Completely upgradeable at any time

Keep up with rapidly changing device requirements and parameters.

- ▼ Upgrade to current E5071C hardware or software options at any time

■ Industry-leading RF performance for the highest throughput and yield

Passive components

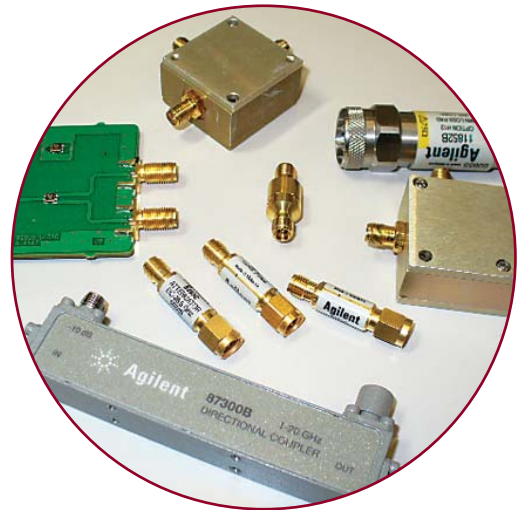
The ENA is ideal for high-volume passive component test. Superior measurement performance contributes the highest throughput increasing your production capability. High repeatability and stability improve test yield.



Best-in-class RF performance

Increase test throughput and reduce the overall cost of test.

- ▼ Fast measurement speed
- ▼ Built-in VBA for easy automation and fast data processing
- ▼ Pre-defined limit test functions to meet your test requirements
- ▼ Segment sweep function to optimize stimulus setting
- ▼ ECal for reduced calibration times



High repeatability increases test yields

Improve test yields with superior measurement performance.

- ▼ Low trace noise
- ▼ Wide dynamic range
- ▼ High temperature stability

Application note: Evolution of Test Automation Using the Built-In VBA with the ENA Series RF Network Analyzers, **5988-6192EN** <http://cp.literature.agilent.com/litweb/pdf/5988-6192EN.pdf>

Easy, accurate in-fixture calibration

Reduce measurement errors.

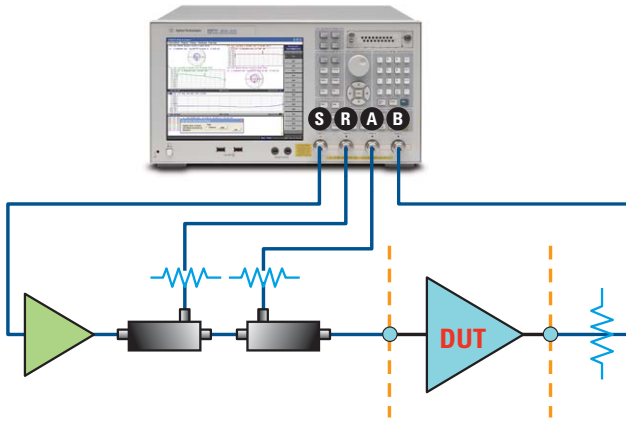
- ▼ 4-port TRL calibration for multiport calibration
- ▼ Automatic port extension (APE) for easy calibration
- ▼ Adapter removal/insertion for accurate mixed-connector calibration

Basic and advanced measurement utilities enable through device characterization

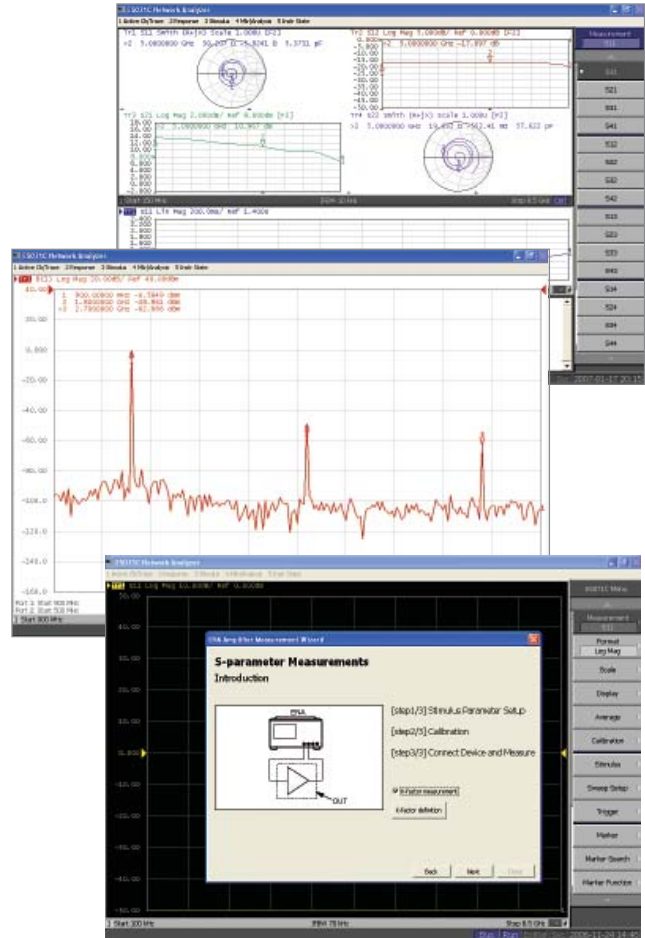
Amplifiers

RF amplifiers are used in a wide variety of industries. Whether characterizing the amplifier performance for wireless communication systems, medical equipment or automotive use, their characterization is always a significant stage in the design and verification process of complete systems.

The ENA features the basic measurement fundamentals for P1dB, PAE or K-factor as well as advanced techniques and built-in functions that simplify the total characterization of your amplifiers.



High-power measurement using external test set mode



Advanced measurement utilities

Simplify the total characterization of your amplifiers with built-in functions.

- ▼ DC voltage measurement capability
- ▼ Built-in bias tee option
- ▼ External test set mode for high-power measurements
- ▼ Trigger lines for complicated testing

Application note: Advanced Measurement Techniques for RF Amplifiers Using Unique Functions of the Agilent E5071C ENA, [5989-6522EN](http://cp.literature.agilent.com/litweb/pdf/5989-6522EN.pdf) <http://cp.literature.agilent.com/litweb/pdf/5989-6522EN.pdf>

Powerful data processing

Quickly and easily process post measurement data.

- ▼ Amplifier measurement wizard program
- ▼ Equation editor for user-defined parameters

Easy software connectivity

Quickly link measurement results back to your simulations.

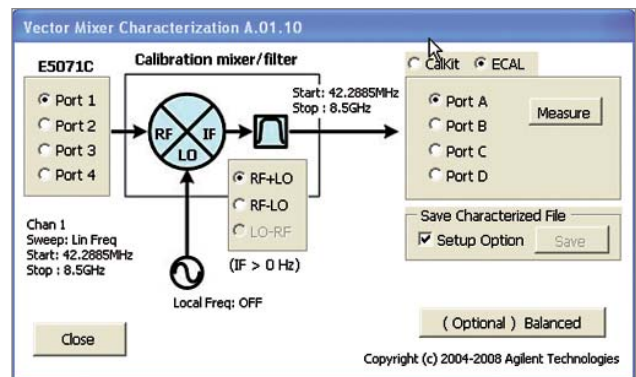
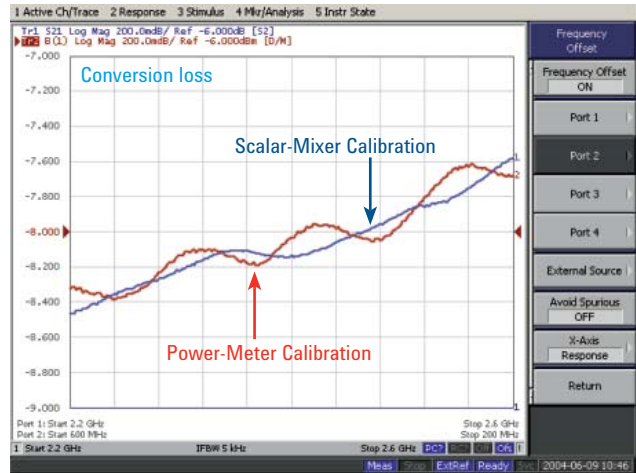
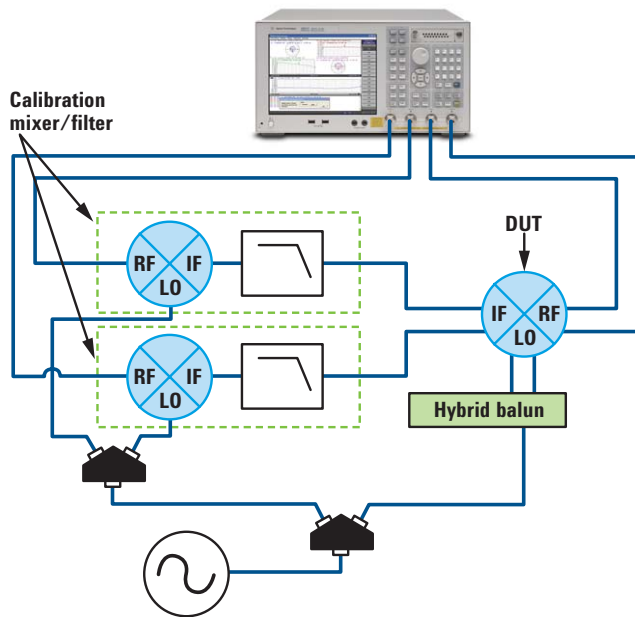
- ▼ Intuilink software
- ▼ ADS link with Advanced Design System software

State-of-the-art measurement capability

Mixers and converters

Frequency converting devices such as mixers are used in many applications. These components require unique measurement techniques because they have different frequencies at the input and output ports.

The ENA offers several measurement methods for accurate characterization of these devices. Advanced calibration methods including Agilent patented vector mixer calibration (VMC) provide more accurate measurement results of your devices than conventional calibration methods.



Powerful built-in software functions

Reduce setup and measurement times.

- ▼ Frequency offset mode (FOM) option
- ▼ Balanced mixer measurement
- ▼ Absolute group delay measurement

Easy-to-use analysis software

Reduce your operating time.

- ▼ Mixer measurement wizard program
- ▼ Vector mixer characterization program

State-of-the-art calibration

Accurately characterize frequency converting devices.

- ▼ Power and receiver calibration
- ▼ Scalar mixer calibration (SMC) for match corrected amplitude measurement
- ▼ Vector mixer calibration (VMC) for single-ended and balanced mixer measurement

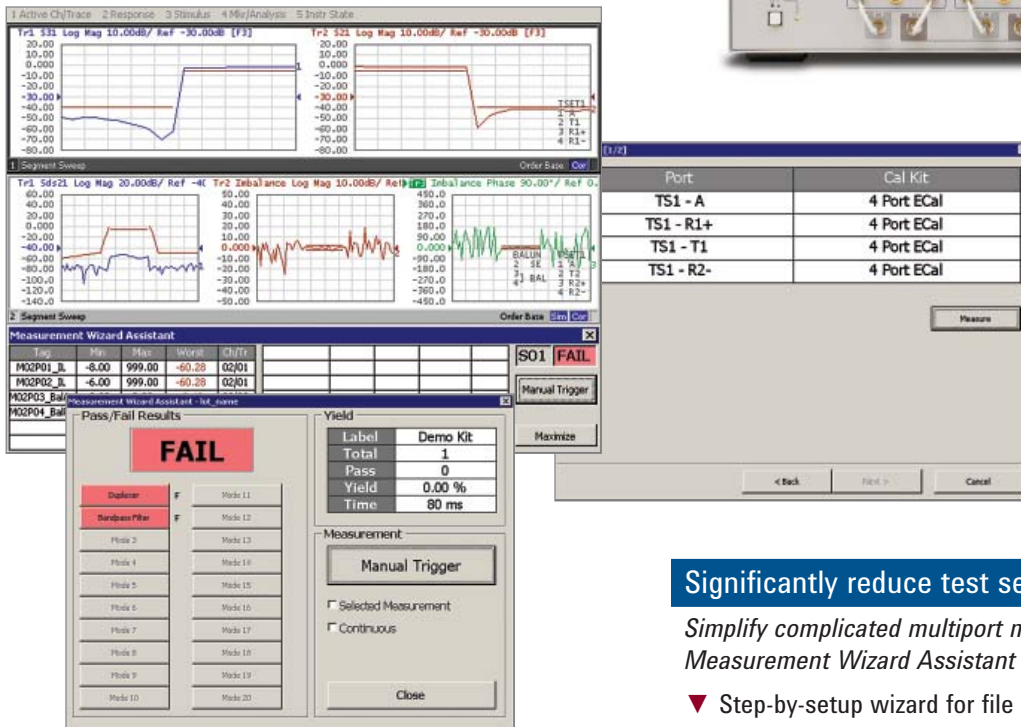
Application Note: Accurate Mixer Measurements Using the Frequency-Offset Mode, [5989-1420EN](http://cp.literature.agilent.com/litweb/pdf/5989-1420EN.pdf)

Expand your measurement capability with the ENA multiport solution

Multiport devices

Today's devices often have multiple functionality integrated into a single component resulting in multiple RF ports. For multiport network analysis, measurement setup time is usually much longer than the actual testing time.

When the ENA is combined with the E5092A configurable multiport test set, they form comprehensive multiport solution. The ENA's Measurement Wizard Assistant (MWA) software simplifies complicated measurement procedures for multiport characterization.



Significantly reduce test setup times

Simplify complicated multiport measurements with Measurement Wizard Assistant software.

- ▼ Step-by-setup wizard for file setup
- ▼ Automatic parameter setup for the ENA
- ▼ Calibration wizard
- ▼ Detailed analysis of the measurement results

Flexible multiport configuration

Meet the increasing, changing demands of multiport devices.

- ▼ E5092A configurable multiport test set
- ▼ Up to 10-port full crossbar measurement
- ▼ Up to 22-port measurement capability

Easily expand up to 40 ports

Meet future demands with expandable multiport capability.

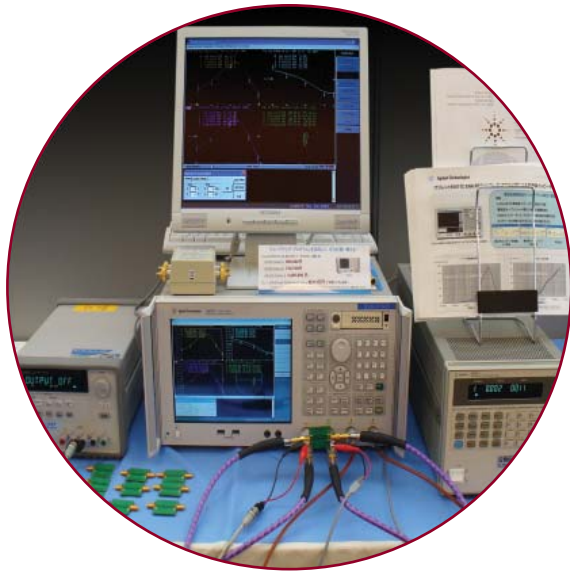
- ▼ Cascade two E5092As for more ports
 - Up to 16-port full crossbar measurement
 - Up to 40-port measurement capability

Application Note: Comprehensive Multiport Solution for the ENA Network Analyzer, **5989-8737EN** <http://cp.literature.agilent.com/litweb/pdf/5989-8737EN.pdf>
Application Note: Measurement Wizard Assistant software, **5989-4855EN** <http://cp.literature.agilent.com/litweb/pdf/5989-4855EN.pdf>

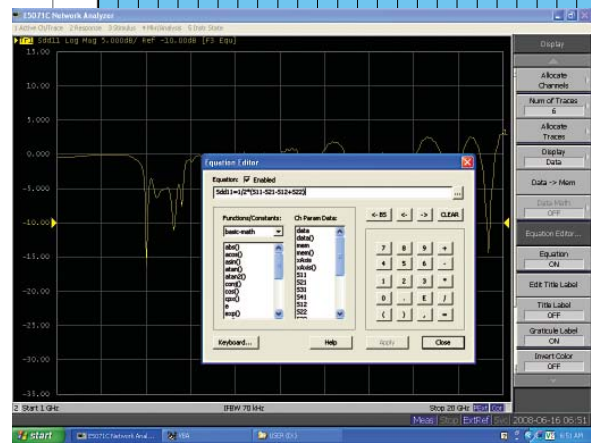
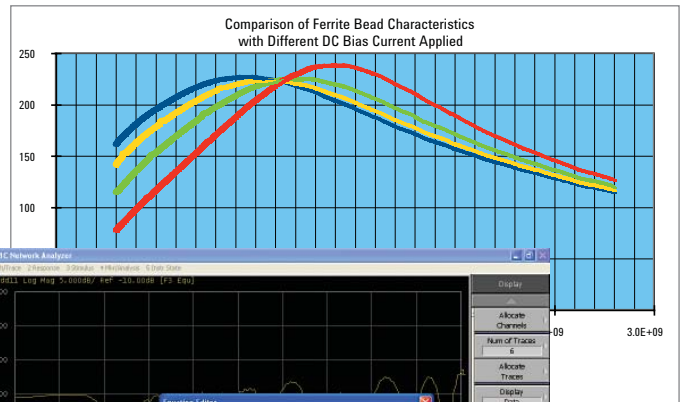
■ Evaluate performance under actual working conditions

EMC components

Electro-magnetic compatibility (EMC) is a key specification in broadband wireless communication and automotive electronics, where EMC components play an important role in meeting strict standard requirements. The ENA's powerful analysis functions help you determine the true performance of your product under the actual working conditions.



DC-biased measurement setup



Sample wizard programs help you set up measurement parameters

Broad operating frequency coverage

Evaluate a wide range of applications.

- ▼ Down to 9 kHz/100 kHz (with bias tees)
- ▼ Upgradeable to higher frequency

Evaluate actual bias conditions

Strengthen performance reliability.

- ▼ VBA sample program (impedance format display with bias current control function)
- ▼ External DC source control via GPIB¹/USB or LAN interface

Powerful balance measurement analysis

Reduce the complexity of measurements for balanced components.

- ▼ 4-port embedding/de-embedding to remove unwanted fixture effects or to simulate circuit effects
- ▼ Impedance value display
- ▼ Common mode rejection ratio (CMRR) measurement

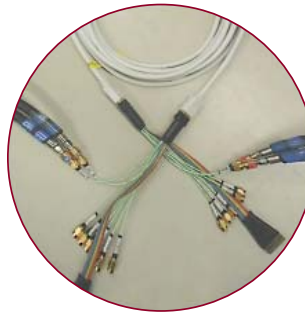
Application Note: Introduction to the Fixture Simulator Function of the ENA Series RF Network Analyzers: Network De-embedding/Embedding and Balanced Measurement, **5988-4923EN** <http://cp.literature.agilent.com/litweb/pdf/5988-4923EN.pdf>

1. Agilent 82357B USB-GPIB interface is necessary.

■ Built-in time- and frequency-domain analysis functions ensure success today and in the future

High-speed digital transmission lines

In high-speed digital communication systems, the effects of signal reflection, leakage and coupling at transmission lines become larger and larger making reliable signal transmission difficult to design. Evaluation of transmission lines in not only time-domain but also in the frequency domain becomes inevitable for successful communication. The ENA's powerful analysis capability makes it the ideal tool for designing, evaluating and troubleshooting circuits and cables for high-speed digital communication.



Frequency- and time-domain evaluations are shown in the same display

Fast, accurate frequency-domain evaluation

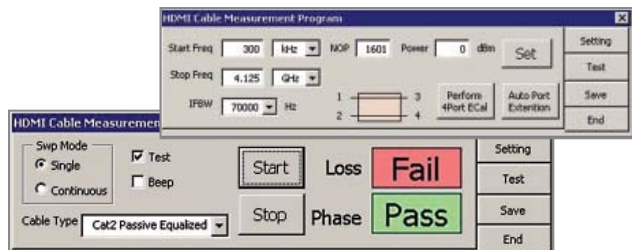
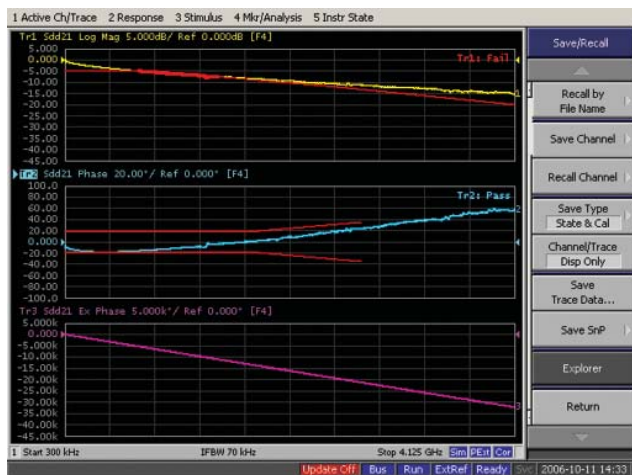
Quickly and accurately evaluate components in the RF frequency domain.

- ▼ Most accurate full 4-port SOLT calibration
- ▼ Wide dynamic range of >100 dB for highly accurate SNR measurements
- ▼ Up to 20 GHz frequency analysis for 5 Gbps applications
- ▼ Fast measurement speed

Easy-to-use functions and programs

Easily measure transmission line characteristics.

- ▼ FEXT, NEXT¹, and mode conversion measurements using a 4-port test set
- ▼ Sample wizard programs for pass/fail testing (HDMI cable test, display port cable test)
- ▼ Supported by Agilent Physical Layer Test System (PLTS) software



HDMI cable measurement program

Powerful time-domain option

Powerful and accurate analysis.

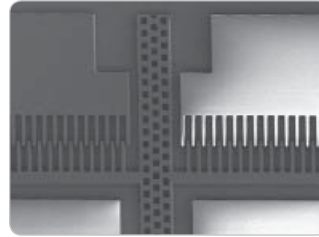
- ▼ Impedance characterization in signal pattern/TDR, TDT
- ▼ Up to 20,001 point measurement with low-pass or band-pass mode selection
- ▼ Gating function to remove unwanted fixture effects
- ▼ Window function setting to optimize pulse rising time effects
- ▼ Accurate vector error calibration at the tip of the test port

1. Far-end crosstalk, near-end crosstalk.

■ Accurate, easy-to-use solution for on wafer test

On-wafer measurements

For successful evaluation of on-wafer semiconductor or RF MEMS devices, the total accuracy of your measurement system and easy operation are crucial. The ENA offers state-of-the-art features for accurate measurements and compatibility with many probe systems.



On-wafer measurements

A complete solution for your on-wafer measurements.

- ▼ Accurate calibration at probe tips
- ▼ Supported by IC-CAP and ADS connection manager
- ▼ Supported by popular on-wafer calibration software
- ▼ Two GSGSG probe contacts using a 4-port test set

Application Note: In-Fixture Characterization Using the ENA Series RF Network Analyzer with Cascade Microtech Probing System.
<http://cp.literature.agilent.com/litweb/pdf/5988-6522EN.pdf>

For additional information regarding Cascade Microtech, visit:
www.cascademicrotech.com



Agilent ENA and Cascade Sumimit 12000

■ Simplify material evaluation

Material measurements

Simplify your material test in the RF range by combining the ENA with ready-to-use Agilent Materials software and probe kits. The ENA's highly-accurate measurements will help you determine the highest performing materials for your application, shortening your design time.



85070E Dielectric Probe Kit





Dielectric Constant

Measure the dielectric characteristics over a wide frequency range.

- ▼ Supported by 85071E Material Measurement software and the 85070E probe system

For additional information regarding material software, visit:
www.agilent.com/find/materials

■ Key specifications

						
Item	E5071C Option 240/245/ 440/445	E5071C Option 260/265/ 460/465	E5071C Option 280/285/ 480/485	E5071C Option 2D5/4D5	E5071C Option 2K5/4K5	8753ES 3
Test frequency	9 or 100 kHz to 4.5 GHz	9 or 100 kHz to 6.5 GHz	9 or 100 kHz to 8.5 GHz	300 kHz to 14 GHz	300 kHz to 20 GHz	30 kHz to 6 GHz
Source power range ¹	– 55 dBm to +10 dBm			–85 dBm to +10 dBm		–85 dBm to +10 dBm
Dynamic range	>123 dB					110 dB
Trace noise	< 0.004 dBrms					0.006 dBrms
Measurement speed ²	41 ms					848 ms
Stability	0.005 dB/degree C					0.02 dB/ degree C
Interface	GPIB/LAN/USB					GPIB
Test port	2- or 4-port					2- or 3-port
Max number of points	20,001					1,601
Max number of channels	160					2
Calibration	SOLT, TRL, Adapter removal/insertion, Unknown thru, ECal, User characterized ECal, SMC, VMC					SOLT, TRL ³ , Adapter Removal
Web-enabled control	Yes					No
Operating system	Open Windows®					Closed
Fixture simulator	Yes					No
Built-in programming environment	VBA					No
Future enhancements /upgradeable	Yes					No
Filter tuning limit lines	Yes					Yes
Built-in bias tees	Yes					Yes
Probe power	Yes					Yes
DC measurements	Yes					Yes
Frequency offset mode option	Yes					Yes
Time-domain option	Yes					Yes

1. Maximum output power is changed according to measurement frequency.

2. 1601 points, Full two-port calibration, 1 GHz to 1.2 GHz, IFBW = 500 kHz (E5071C), 6 kHz (8753ES).

3. For more detail, refer to **Application Note: 7 Reasons to Upgrade from your 8753 to an ENA Network Analyzer, AN 1478, 5989-0206EN** <http://cp.literature.agilent.com/litweb/pdf/5989-0206EN.pdf>

For more details, refer to the ENA E5071C Network Analyzer Data Sheet, **5989-5479EN** <http://cp.literature.agilent.com/litweb/pdf/5989-5479EN.pdf>

■ Secure your assets

Protecting your 8753 software investment

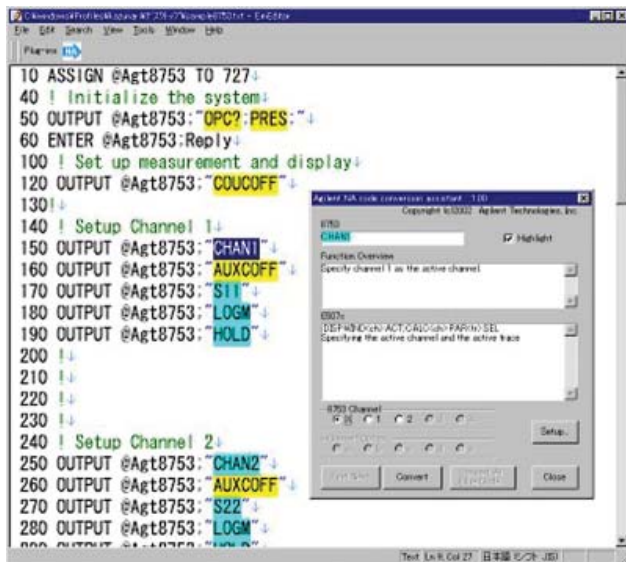
Agilent is your partner in network analyzer migration. We protect your 8753 series software investment by providing various support tools that ease migration.

Protecting your hardware investment

The E5071C is a safe investment because of its flexibility. You can easily upgrade any feature of the E5071C whenever you need the feature! This includes not only software options like time-domain mode, frequency offset mode, and MWA, but also hardware options such as frequency, test-port and high stability.



**Frequency, Port,
SW upgrades!**



■ Ordering information

E5071C ENA network analyzer

- Option E5071C-240** 2-port test set, 9 kHz to 4.5 GHz
without bias tees
- Option E5071C-245** 2-port test set, 100 kHz to 4.5 GHz
with bias tees
- Option E5071C-440** 4-port test set, 9 kHz to 4.5 GHz
without bias tees
- Option E5071C-445** 4-port test set, 100 kHz to 4.5 GHz
with bias tees
- Option E5071C-260** 2-port test set, 9 kHz to 6.5 GHz
without bias tees
- Option E5071C-265** 2-port test set, 100 kHz to 6.5 GHz
with bias tees
- Option E5071C-460** 4-port test set, 9 kHz to 6.5 GHz
without bias tees
- Option E5071C-465** 4-port test set, 100 kHz to 6.5 GHz
with bias tees
- Option E5071C-280** 2-port test set, 9 kHz to 8.5 GHz
without bias tees
- Option E5071C-285** 2-port test set, 100 kHz to 8.5 GHz
with bias tees
- Option E5071C-480** 4-port test set, 9 kHz to 8.5 GHz
without bias tees
- Option E5071C-485** 4-port test set, 100 kHz to 8.5 GHz
with bias tees
- Option E5071C-2D5** 2-port test set, 300 kHz to 14 GHz
with bias tees
- Option E5071C-4D5** 4-port test set, 300 kHz to 14 GHz
with bias tees
- Option E5071C-2K5** 2-port test set, 300 kHz to 20 GHz
with bias tees
- Option E5071C-4K5** 4-port test set, 300 kHz to 20 GHz
with bias tees

Additional Options

- Option E5071C-008** Frequency offset mode
- Option E5071C-010** Time domain analysis
- Option E5071C-790** Measurement Wizard Assistant software
- Option E5071C-1E5** High stability timebase
- Option E5071C-017** Removable hard disk drive

E5092A Configurable multiport test set

- Option E5092A 020** 20 GHz, up to 22-port configurable multiport test set

For details, refer to the *ENA Network Analyzer Configuration Guide*,

<http://cp.literature.agilent.com/litweb/pdf/5989-5480EN.pdf>

■ Web Resources

available on the ENA Web site: www.agilent.com/find/ena
Visit our Web sites for additional product information and literature.

- ENA series network analyzers:
www.agilent.com/find/ena
- ENA series service and support:
http://www.agilent.com/find/ena_support
- Sample VBA Library for ENA Series:
<http://www.agilent.com/find/enavba>
- Balanced measurements:
www.agilent.com/find/balanced
- Electronic calibration (ECal) modules:
www.agilent.com/find/ecal
- Materials measurements:
www.agilent.com/find/materials
- Multiport test sets:
www.agilent.com/find/multiport
- Physical layer test systems:
www.agilent.com/find/plts
- PNA microwave network analyzers:
www.agilent.com/find/pna
- RF and microwave accessories:
www.agilent.com/find/accessories
- * RF and microwave network analysis and impedance probings:
www.agilent.com/find/probingrf
- RF and microwave network analyzer calibration resources:
www.agilent.com/find/nacal

■ Literature

ENA Series Data Sheet,

<http://cp.literature.agilent.com/litweb/pdf/5989-5479EN.pdf>

ENA Series Configuration Guide,

<http://cp.literature.agilent.com/litweb/pdf/5989-5480EN.pdf>

Network Analyzer Selection Guide,

<http://cp.literature.agilent.com/litweb/pdf/5989-7603EN.pdf>

Test Solutions for Multiport and Balanced Devices Selection Guide,

<http://cp.literature.agilent.com/litweb/pdf/5988-2461EN.pdf>

Remove all doubt

Our repair and calibration services will get your equipment back to you, performing like new, when promised. You will get full value out of your Agilent equipment through-out its lifetime. Your equipment will be serviced by Agilent-trained technicians using the latest factory calibration procedures, automated repair diagnostics and genuine parts. You will always have the utmost confidence in your measurements. For information regarding self maintenance of this product, please contact your Agilent office.

Agilent offers a wide range of additional expert test and measurement services for your equipment, including initial start-up assistance, onsite education and training, as well as design, system integration, and project management.

For more information on repair and calibration services, go to:

www.agilent.com/find/removealldoubt



Agilent Email Updates

www.agilent.com/find/emailupdates

Get the latest information on the products and applications you select.



Agilent Direct

www.agilent.com/find/agilentdirect

Quickly choose and use your test equipment solutions with confidence.



www.lxistandard.org

LXI is the LAN-based successor to GPIB, providing faster, more efficient connectivity. Agilent is a founding member of the LXI consortium.

Microsoft is a U.S. registered trademark of Microsoft Corporation.

Java™ is a U.S. trademark of Sun Microsystems, Inc.

www.agilent.com

www.agilent.com/find/ena

For more information on Agilent Technologies' products, applications or services, please contact your local Agilent office. The complete list is available at:

www.agilent.com/find/contactus

Americas

Canada	(877) 894-4414
Latin America	305 269 7500
United States	(800) 829-4444

Asia Pacific

Australia	1 800 629 485
China	800 810 0189
Hong Kong	800 938 693
India	1 800 112 929
Japan	0120 (421) 345
Korea	080 769 0800
Malaysia	1 800 888 848
Singapore	1 800 375 8100
Taiwan	0800 047 866
Thailand	1 800 226 008

Europe & Middle East

Austria	01 36027 71571
Belgium	32 (0) 2 404 93 40
Denmark	45 70 13 15 15
Finland	358 (0) 10 855 2100
France	0825 010 700*
	*0.125 €/minute
Germany	07031 464 6333
Ireland	1890 924 204
Israel	972-3-9288-504/544
Italy	39 02 92 60 8484
Netherlands	31 (0) 20 547 2111
Spain	34 (91) 631 3300
Sweden	0200-88 22 55
Switzerland	0800 80 53 53
United Kingdom	44 (0) 118 9276201
Other European Countries:	

www.agilent.com/find/contactus

Revised: March 24, 2009

Product specifications and descriptions in this document subject to change without notice.

© Agilent Technologies, Inc. 2009

Printed in USA, July 1, 2009

5989-5478EN



Agilent Technologies